

AN INTRODUCTION TO THE QUALITY OF LIFE FRAMEWORK

JULY 2022

IMPROVE
THE **QUALITY**
OF LIFE
FOR EVERY
STUDENT



STAFF

FAMILY

STUDENT



BB
The school where
individuality flourishes

**HEALTHY,
HAPPY AND
SUCCESSFUL
ADULTS**

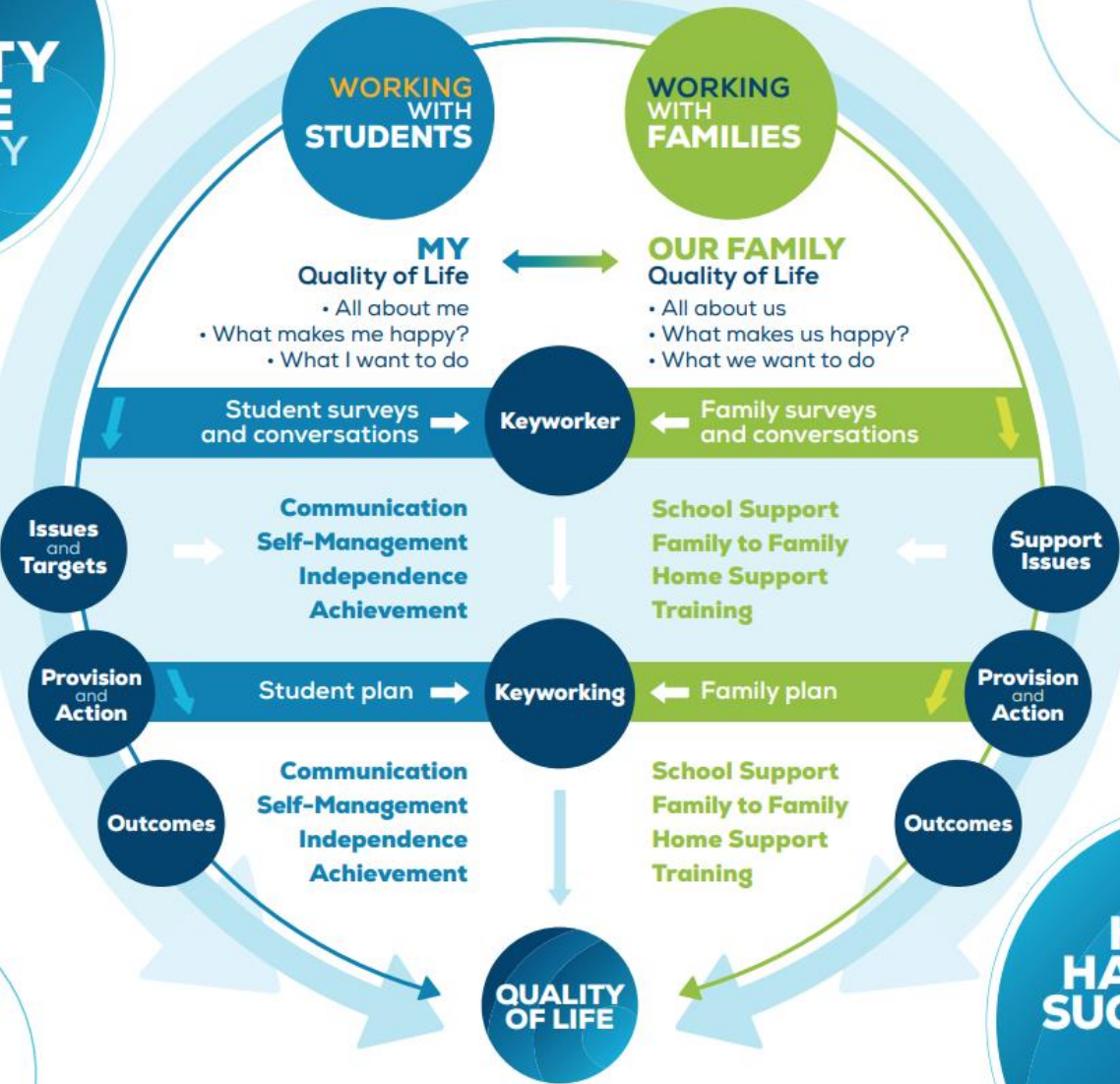
THE RATIONALE FOR THE FRAMEWORK

- To improve the quality of life for all our students.
- To focus on the most important areas for personal development for both the student and their family.
- To provide a consistent home/school approach in support of specific needs.
- To provide consistent and transparent communication.
- To evidence and celebrate the amazing progress we know our students make and the positive impact this can have at home and with the family.

OUR EXPECTATIONS

- For the framework to be effective, we need your commitment to working with us alongside the commitment from your son.

**IMPROVE
THE QUALITY
OF LIFE
FOR EVERY
STUDENT**



BB
The school where individuality flourishes

**HEALTHY,
HAPPY AND
SUCCESSFUL
ADULTS**

THE ROLE OF THE KEYWORKER

- A critical relationship for the success of the placement.
- A single contact point for all communication between home and school.
- Transparency, honesty and support.
- Meets with the student for a keyworking session once a week on Friday afternoon (1.15-1.45pm)
- Contacts the family with a weekly update in the way that suits the family (e.g. email or phone call)

STUDENT AND FAMILY SURVEYS

- Research driven for young people with ASC.
- Some of the statements will be challenging on an emotional level.
- Surveys completed at the start and end of each term.
- Keyworker collates and triangulates the student and family responses to set targets for the term.
- Targets shared with student and family.

WHAT HAPPENS NEXT?

- Keyworkers have been allocated and will be introducing themselves to you in the coming week.
- Fete Day July 22nd – An opportunity to meet your keyworker face-to-face.
- September 2022 – Introduction of the first set of surveys to be completed by you at home and for us to complete in school with the student.
- September 2022 – Agreeing and setting targets for the coming term.
- December 2022 – Next survey point and review of progress towards targets set.