

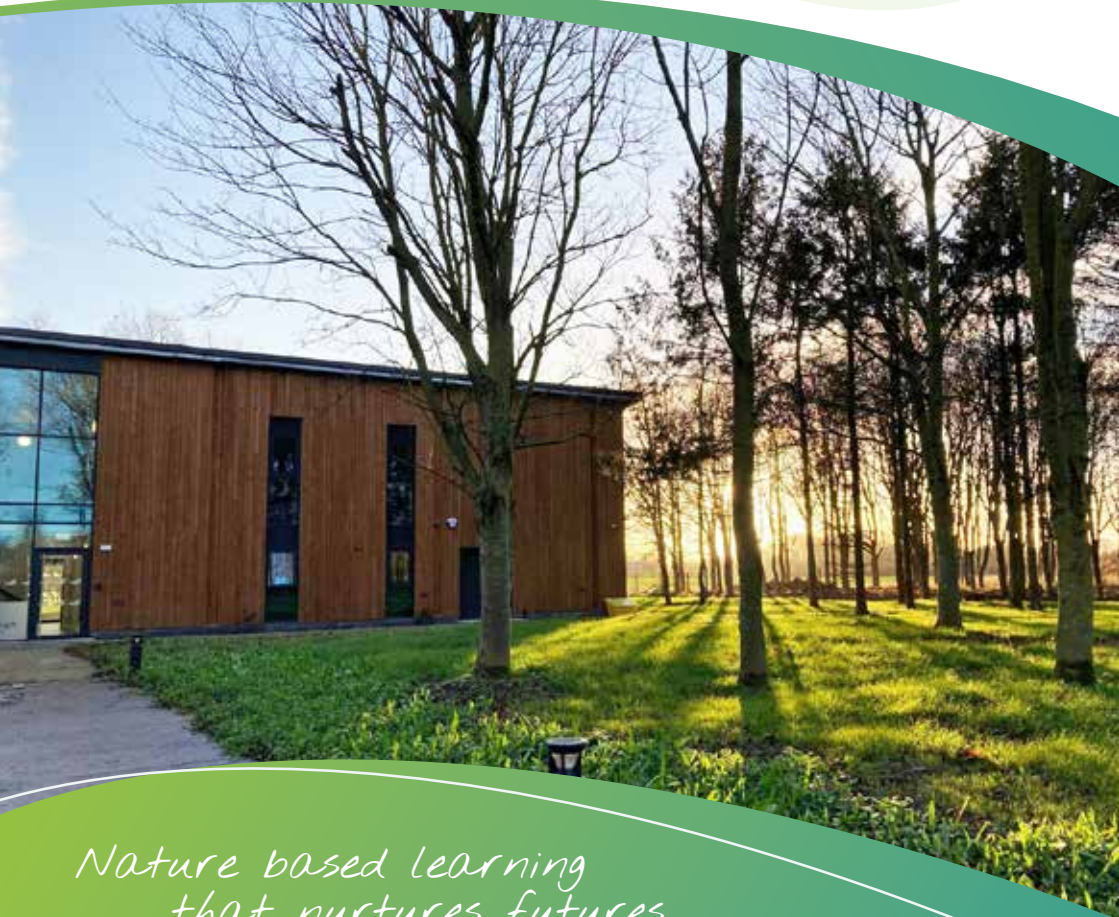


# Breckenbrough

*Woodland Centre*

---

Alternative Provision



*Nature based learning  
that nurtures futures*

[www.breckenbrough.org.uk/woodland](http://www.breckenbrough.org.uk/woodland)



## Contents

Welcome	3
Our Vision	3
Life at Woodland	4
Woodland Centre Provision	6
Curriculum Offer	6
Vocational	7
Bespoke Provision & Timetables	7
How to find us	9

# Welcome

from Woodland Centre Coordinator,  
Tracey Laycock



'Hello and welcome to the Woodland Centre Prospectus. We are delighted to share with you details about our brand new centre and provision. The prospectus will guide you through photos of our facilities, details of our offer and how to get in touch to find out more.

With small classes and a consistent team of staff on hand in and out of the classroom, students will be given an experience that will encourage, inspire and support them to reach their full potential.

As well as working towards their qualifications, students will also have the opportunities here to be involved in enrichment and enterprise projects, community projects and Woodland Centre events'.

## Our vision

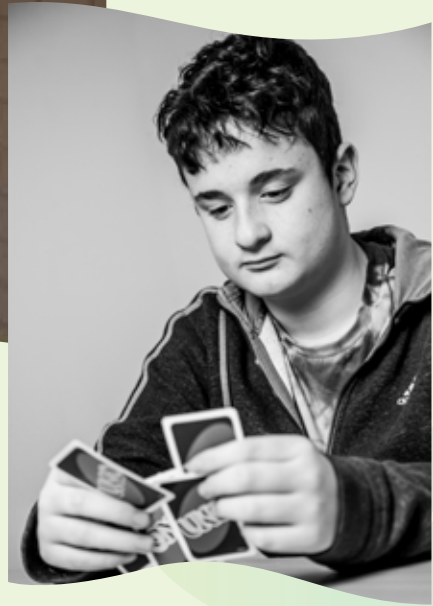
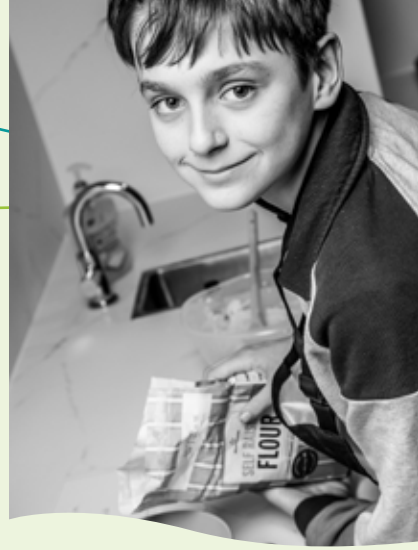
To provide a safe, nurturing, inclusive, and inspiring alternative provision in a woodland-based learning environment, where every student is seen, heard and valued. We aim to re-engage young people in education through meaningful, nature-connected experiences.

Through learning in the natural world, we will empower young people to build life skills, develop emotional resilience and discover their unique strengths, preparing them to lead happy, healthy and fulfilling lives.

# Life at Woodland

- Start your day right - breakfast for all students. Help yourself to a range of food and drinks to help start your day. Healthy body, healthy mind!
- Enrichment - Being a student is about learning new skills, meeting new friends and building great memories. You will get the chance to take part in trips, activities and events.
- Enterprise - Woodland Centre includes enterprise opportunities and events that can develop career, professional skills and business know-how.
- Charity Fun - You will get the chance to set up, be part of and join in fun events for many good causes, locally and widely known, developing community inclusion and social responsibility.
- Additional Support - As part of the provision at Breckenbrough School, we have a team of professionals who deliver therapeutic interventions that include Speech and Language (SALT), Occupational Therapy (OT) and Psychology Services. Although these therapies will not be accessible or included in the offer for students at the Woodland Centre, there may be opportunities for therapeutic advice and signposting via the Woodland Centre staff and this team. This collaboration could offer information, advice, guidance and signposting if appropriate. Any such conversations would be on an individual basis and would not be as standard or included in the provision at the Woodland Centre.





# Woodland Centre Provision

The Woodland Centre provides a safe, nurturing, inclusive and inspiring alternative provision in a woodland-based learning environment. This provision is for young people who, due to a variety of reasons, are unable to access education. The aim of the provision is to achieve positive engagement in education, development of wider employability skills, and positive and sustainable progression pathways.

## Curriculum Offer

- Maths and English - Functional Skills Entry Levels to Level 2
- Vocational - see below for more detail
- PSHE
- Enterprise & Enrichment
- Personal Development
- Careers & Employability

## Vocational

The vocational sessions will cover a wide range of subjects, but will all have a common thread and focus on Environmental and Sustainability. Subjects will include;

- Environmental Sustainability
- Conservation
- Horticulture
- Outdoors
- Construction Skills - this will cover a range of different trades eg bricklaying, joinery, painting & decorating
- Healthy living, Food and Cooking
- Art and Design
- Digital Skills

\*Initial and ongoing assessments, along with attendance and engagement, will determine if any registration for qualifications are completed.

This is a roll-on-roll-off provision that can be accessed at any point during the academic year on a part-time basis. (Full-time may be considered - to be discussed further at initial referral). Provision days are Monday to Friday, 10am - 3pm.

\*Depending upon the timetable request not all lessons may be accessed if a learner is not attending on those days.



## Bespoke Provision & Timetables

We pride ourselves in our ability to be flexible and responsive to our stakeholders and students. Bespoke small group provision and individual timetables for learners can be considered upon request.



# How to find us



**what3words**

///resting.scored.palaces



## Contact Details

Breckenbrough Woodland Centre  
Skutterskelfe  
TS15 0JR  
Tel: 01642 721380  
Email: [BWC@breckenbrough.org.uk](mailto:BWC@breckenbrough.org.uk)

**Tracey Laycock**  
Woodland Centre Coordinator  
Tel: 07355 628397  
Email: [Tracey.laycock@breckenbrough.org.uk](mailto:Tracey.laycock@breckenbrough.org.uk)

**Lianne Curran**  
Office Manager  
Tel: 07541 692854  
Email: [Lianne.curran@breckenbrough.org.uk](mailto:Lianne.curran@breckenbrough.org.uk)



**Breckenbrough**

*Woodland Centre*

---

Alternative Provision

[www.breckenbrough.org.uk/woodland](http://www.breckenbrough.org.uk/woodland)